

Farm Retirement

LOCATION: 87708 285th St, Danube, MN 56230

AUCTION

THURSDAY, AUGUST 29, 2019 | 10AM 2019

LOCATION: From Danube, MN, 4 miles north on Cty Rd 1, .5 miles west on 870th Ave., .75 miles north on 285th St. From Roseland, MN, 5 miles south on Cty Rd 5 turns into Cty Rd 1, .5 miles west on 880th Ave., .25 miles south on 285th St. 87708 285th St, Danube, MN 56230



AUCTIONEER'S NOTE: The Heller's have farmed over 43 years and have decided to retire. Major equipment is shedded with meticulous service & maintenance records. Online bidding available on all major equipment. Major equipment will sell at 10:30AM. Registration, terms, & details at SteffesGroup.com.



TRACK TRACTORS

2008 Caterpillar Challenger MT855B, powershift, 5 hyd., Beeline auto steer, hyd. wide swing drawbar, climate control, power adj. mirrors, (20) front weights, 3,854.5 hrs., S/NAGCC0855TNTJG1007, single owner, 1 season on new tracks, yearly oil analysis records & inspections from Ziegler Cat
2006 John Deere 8430T, CAH, buddy seat, powershift, 5 hyd., 3 pt., quick hitch, 1000 PTO, auto steer ready, HID lights, beacon light, extra cab lights, K&M rock box, radar, (22) front weights, front idler weights, 4" wide idlers, 24" tracks set at 88", 4,486 hrs., S/NRW8430T901011, \$13,000 Inspection & Injectors work order April 2018

MFWD TRACTORS

2008 John Deere 8130, CAH, active seat, buddy seat, powershift, 4 hyd., quick hitch, 1000 PTO, integrated auto steer, K&M drawbar kit, HID lights, extra light pkg., K&M rock box, front fenders, Goodyear 320/85R38 front tires, Goodyear 320/90R54 w/10-bolt duals, 2,532 hrs., S/NRW8130P026922, \$9,400 Inspection work order April 2018
2007 John Deere 8330, CAH, active seat, buddy seat, powershift, 4 hyd., 3 pt., quick hitch, integrated auto steer, diff lock, K&M drawbar kit, HID lights, extra cab lights, extendable mirrors, rock box, Goodyear 320/85R38 front tires, Goodyear 380/90R50 w/10-bolt duals, 2,983 hrs., S/NRW8330P017575, \$6,900 Inspection work order January 2018
2000 John Deere 8110, CAH, powershift, 3 hyd., 3 pt., quick hitch, 1000 PTO, diff lock, mirrors, ext. lights, ext. cab lights, K&M rock box, 320/85R34 front tires, New BKT 380/90R46 rear tires w/10-bolt duals, 4,552 hrs., S/NRW8110P002110, \$19,214 Inspection & transmission work order January 2018

2WD TRACTORS

1979 John Deere 4440, CAH, quad range, 3 hyd., 3 pt., quick hitch, dual PTO, diff lock, John Deere 740 Classic quick tach, loader, quick tach 8" bucket, joystick controls, 3rd valve, 11.00-16 front tires, Goodyear 380/85R46 rear tires w/10-bolt hub duals, 689 hrs., S/N4440H19071R, extensive history records
1962 John Deere 4010, wide front, ROPS w/canopy, open station, diesel, syncro, 2 hyd., 3 pt., quick hitch, 540 PTO, flat top fenders, K&M step kit, (7) front 20 Series weights, 14.9-38 rear tires, 4,047 hrs., S/N401021T22004
1979 John Deere 2440, adj. wide front, diesel, 3 hyd., 3 pt., 540 PTO, block heater, flat top fenders, bar axles, New Firestone 16.9-30 tires, 4,153 hrs., S/N 299507, Restored

TRACTOR LOADER BACKHOE & FORKLIFT

Ford 5500 tractor loader backhoe, cab, heat, diesel, 2WD, shuttle shift, 78" bucket, 22" rear bucket, 9.00x20 front tires, Goodyear 16.9-28 rear tires, shows 772 hrs.
2004 Mitsubishi FG20ZT forklift, ROPS, LP, 2 stage mast, 48" forks, solid tires, 7,453 hrs., S/NF35-00026

COMBINE & HEADS

2008 John Deere 9770 combine, 2WD, PRWD, Contour-Master, bullet rotor, Y&M w/mapping, 5" display, direct drive feeder house, hyd. cap. lift, Maurer hopper top, hyd. bubble up auger, single pt. hookup, Goodyear 710/70R38 front tires w/duals, Goodyear 28L26 rear tires, 2,148 sep. hrs., 2,863 engine hrs., S/NH09770S727897, includes annual inspection records from Kibble, \$12,000 of service work in 2017, \$12,000 of service work in 2017
2009 John Deere 612C chopping corn head, 12x22", hyd. deck plates, flex shafts, stalk stompers, stubble light pkg., single pt. hookup, S/NH0612CC730301, 1,000 acres on \$31,000 Rebuild work order January 2017

GPS/NAVIGATION EQUIPMENT

John Deere Starfire ITC receiver
(2) John Deere 3000 receivers
John Deere brown box w/mobile processor, SF2 card
(2) John Deere 2600 displays w/SF1 Ag Cam camera system

DRILLS

John Deere 455 drill, 30", 6" spacing, press wheels, markers, S/NN0455H001071
John Deere 9300 grain drill, 30", 3 section, 6" spacing, rear press wheels, markers, 300 acres on new disc openers & scrapers, S/N206F000760N
John Deere 8300 drill, 13", 6" spacing, hyd. lift., rubber end wheel, rubber press wheels, S/NN08000X067101
Farmhand tandem axle drill transport, 30", 3 pt., hyd. lift, implement tires

PLANTERS

2009 John Deere DB44, CCS, 24x22", VacuMeter, hyd. drive, Pro-Shaft drive, 20/20 SeedSense monitor, Delta Force down pressure, mini hopper ext., Yetter row cleaners, (3) section disconnect, plates to include pellet (sorghum), corn & soybean, markers, S/NA0DB44X730242
John Deere 7300, 12x22", VacuMeter, ground drive, 1.5 bu. boxes, Dawn row cleaners, rear lift assist, John Deere 250 monitor, plates to include corn, bean, sweet corn & sugar beets plates, markers, S/NA07300A100790
John Deere 7100, single row, pull-type, 1.5 bu. box, ground drive

TILLAGE EQUIPMENT

Salford 570RTSHD vertical tillage, 31", all wave blades, rolling baskets, weight pkg., 3-bar coil tine harrow, S/N112501M1
John Deere 2410 chisel plow, 33", 2" points, floating hitch, single pt. depth, 3-bar harrow, S/NN02410X010352
John Deere 2210 field cultivator, 50", 9" knock-on sweeps, double wing fold, floating hitch, rear crumbler, single pt. depth, 3-bar harrow, S/NN02210X008269
John Deere 637 disc, rock flex, hyd. leveling, 3-bar coil tine harrow, (2) front gauge wheels
John Deere 2700 disc ripper, 9 shank, 24" spacing, 10" point, 9" covering boards, rear disc leveler, single pt. depth, Summer MA1420 3-bar coil tine harrow, S/NN02700X002099
John Deere 3710 auto reset plow, 10 bottom, flex frame, single coultter, new wear parts, S/NN00300813
John Deere 856 row crop cultivator, 24x22", 3 pt., hyd. wing fold, C-shanks, rear lift assist, rolling shields, (6) gauge wheels, S/NN00856X000640
Summers pull-type coil packer, 34", rock flex, S/NZ0201
Kongsilde 3500 soil finisher, 34", 5-bar, rear hyd., rear crumbler, rear hitch, Danish tine, 3-bar spike tooth harrow
John Deere 1010 field cultivator, 9", 3 pt.

CONVENTIONAL TRUCKS

2002 IHC 9400I day cab, 60 Series Detroit, 470 hp., 10 spd., engine brake, air ride, air slide, cruise, diff lock, wet kit, 1/2 fenders, 181" WB, 275/80R22.5 tires, front aluminum rims, rear steel rims, 503,355 miles, S/N2HSCNAMRX2C046368
1998 IHC 9100 day cab, C12 Cat, 410 hp., Rockwell 10 spd., engine brake, air ride, air slide, cruise, diff lock, 1/2 fenders, 161" WB, 275/80R22.5 tires, front aluminum rims, rear steel rims, 644,713 miles, S/N2HSFRAXR6WC059380
1995 IHC 9200 day cab, 3176 Cat, Eaton Fuller 9 spd., air ride, air slide, cruise, diff lock, 1/2 fenders, 213" WB, 11R22.5 tires, front aluminum rims, rear steel rims, 104,750 miles, S/N2HSFMATR9SC014366
1992 IHC 9300 Eagle day cab, 3406 Cat, 13 spd., Legacy air ride seat, air ride, air slide 5th wheel, diff lock, headache rack, wet kit, dual tank, aluminum tool box, 201" WB, 11R22.5 tires on all aluminum rims, 542,433 miles, S/N2HSFLUR4NCO59560, \$4,000 work order in 2018

GRAIN TRUCK

1972 Ford L9000 tandem axle grain truck, 8V-71 Detroit, 13 spd., diff lock, 24" box & hoist, gain gate & beet gate, 10.00-20 pusher tires on Dayton, 385/65R22.5 front tires on Daytons, 10.00-20 driver tires on Daytons, 578,961 miles, S/NU907VNS3095, New air ride seat assembly, \$3,000 work order in 2017

PICKUPS

1997 Dodge 3500 Laramie SLT, ext. cab, 5 spd., 4WD, cloth interior, Cadet Western Series 8'x92" flatbed, headache rack, DRW 215/85R16 tires, 108,382 miles, S/N3B7MF33W9VM525712
2006 Dodge Ram 2500, ext. cab, long box, diesel, automatic, 4WD, 5th wheel ball, 265/70R16 tires, 188,488 miles, S/N3D7KS26CX6G137442, \$4,420 transmission work order in August 2018
2001 Ford Ranger, ext. cab, V6 gas, automatic, 4WD, power window & locks, alloy wheels, 127,546 miles, S/N1FTZR15E01PA23424

GRAIN CART & GRAVITY BOXES

Brent 1080 grain cart, 1000 PTO, extensions, hyd. spout, tarp, camera system, scale, 36" tracks, green, S/NB31530171
Ez-Flow 300 gravity box, Sudenga hyd. drive auger, tarp, on 1074 running gear, 12.5-15 tires
Parker gravity box, 250 bu., tarp, 4-wheel running gear

TRAILERS

2013 Wilson Pacesetter DWH-500 hopper bottom trailer, 42'x66", ag hopper, spring ride, single belt drive traps, power roll tarp, 11R22.5 tires on outside aluminum rims, S/N4WW4412S5D7704281
1992 Wilson Pacesetter DWH-200 hopper bottom trailer, 42'x66", spring ride, 2 spd. traps, tarp, 11R22.5 tires on steel rims, S/N1W1MAFYD1NA216164, New tarp, brakes, drums & oil seals in 2017
2008 Trail King ASH-2-4172 live bottom trailer, 41'x72", 48" belt, all aluminum, spring ride, power roll tarp, 425/65R22.5 tires on aluminum wheels, S/N1TKHA42278B013889
1995 Monan van trailer, air ride, (3) 1,400 gal. cone bottom Enduraplas tanks, (2) induction cones, stainless steel mixing tub, Honda pump, 2" Banjo hose reel, aluminum floor, roll-up rear door, rear step, sliding axle, 255/75R22.5 tires on steel rims, S/N1NNVA4524SM231551
2011 PJ tandem axle bumper hitch trailer, 14'x80", wood deck, side ramps, rear ramp, aluminum fenders, 5-bolt wheel, S/N4P5U81429B2155798
Shop-Built tandem axle bumper hitch flatbed trailer, 6'x12", wood deck, 225/75R15 tires
Unverferth HT36 header trailer, 36', 4-wheel, 22.5x8.0x12 tires, S/N696
Ez-Trail 880 header trailer, 4-wheel, 28x12x12 tires, S/NS44-700

SUGARBEE EQUIPMENT

2009 WIC Amity 2500 beet lifter, 8x22", 1000 PTO, 11.2x24 tires, S/NH359209, \$7,500 work order in 2018
Pickett CT2422-F beet row crop manager (beet thinner), 24x22", 3 pt., wing fold, S/N06-270
Alloway Topmaster RD267 beet topper, 12x22", 1000 PTO, scalpers, HID lights, 1 year on steel flails, S/N3219
1974 Gind beet trailer, 40', spring ride, side dump, adj. axle, 11R22.5 tires on steel rims, S/NG1950Y312



HELLER FARMS LLC
HELLER FARMS CHARITABLE REMAINDER UNITRUST
The Lutheran Home Association Foundation: Trustee
 For information contact Ben 320.522.2145
 or Eric Gabrielson at Steffes Group, 320.693.9371 or 701.238.2570



SteffesGroup.com

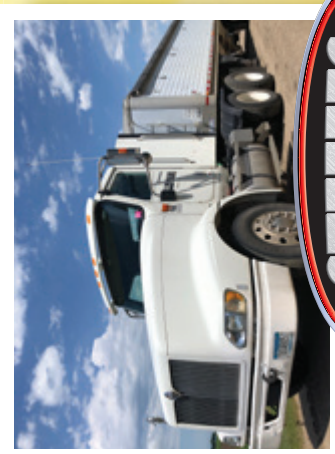
Steffes Group, Inc., 24400 MN Hwy 22 S, Litchfield, MN 55355 | 320.693.9371 Ashley Huhn MN47-002., Randy Kath MN47-007, Eric Gabrielson MN47-006, Shelly Weinzell MN47-017, Scott Steffes MN14-51, Brad Olstad MN14-70, Bob Steffes MN14-09, Max Steffes MN03-57

TERMS: All items sold as is where is. Payment of cash or check must be made sale day before removal of items. Statements made auction day take precedence over all advertising. \$35 documentation fee applies to all titled vehicles. Titles will be mailed. Canadian buyers need a bank letter of credit to facilitate border transfer.

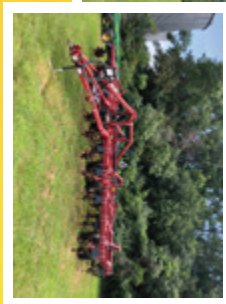
Farm Retirement

AUCTION

THURSDAY, AUGUST 29, 2019 | 10AM



LOCATION: 87708 285th St, Danube, MN 56230



Farm Retirement AUCTION

Steffes Group, Inc.
24400 MN Hwy 22 S
Litchfield, MN 55355



PRESORTED
FIRST CLASS
US POSTAGE
PAID
PERMIT #315
FARGO, ND

HELLER FARMS LLC

HELLER FARMS CHARITABLE REMAINDER UNITRUST
The Lutheran Home Association Foundation: Trustee

For information contact Ben 320.522.2145

or Eric Gabrielson at Steffes Group, 320.693.9371 or 701.238.2570

SPRAYERS

2011 Hardi Commander 6600 sprayer, 132' boom, 1000 PTO, triple nozzle, 1,800 gal. tank, PTO diaphragm pump, rinse tank, boom suspension, (3) sensor boom height, 7-section control, 5500 display, hyd. hitch, steerable axle, adj. axles, Titan 320/90R50 tires w/duals, S/N102364

AgChem 502 pull-type sprayer, 35' x-fold boom, 500 gal. tank, hyd. drive pump, S/N50196

Keller band sprayer, 72Rx22", pull-type, Riverbend 750 gal. tank, foamer

Alloway band sprayer, 24x22", 3 pt., 500 gal. tank, hyd. drive pump, 3-section control, lift assist, (4) gauge wheels, S/N2691

GRAIN HANDLING EQUIPMENT

Unverferth 3750 Seedrunner seed tender, Honda engine, 2-compartment, self-loading, tarp, scale, cordless remote, side windows, on tri-axle 5th wheel trailer, torsion bar axle, 235/85R16 tires, S/ND55-620-185

Westfield MK100-71 auger, 70"x10", low pro swing hopper, mechanical drive, hyd. lift, 540 PTO, S/N152697

Westfield auger, 46"x8", center 540 PTO, S/N12519

Sudenga drill fill auger, hyd. drive

OTHER FARM EQUIPMENT

Case-IH MT rotary hoe, 44', 24x22", 3 pt., high clearance, wing fold

2015 New Holland H6740 Mow Max disc mower, 8', 3 pt., 540 PTO, S/NYEN145155

Eversman 4512 land leveler, 12' blade, pull-type, 4-wheel

Farm King blade, 8', 3 pt.

Degelman R570 rockpicker, fork style, S/N20482

Nabors rock napper, 3 pt., w/stand

Tandem axle rock wagon, 6'x10', hyd. dump, 31x10.50x15 tires

Woods SS108-2 snowblower, 9', 2 stage, double auger, hyd. turn & spout, 3 pt., 1000 PTO, S/N1235108

King Kutter II TG84YK rear tine tiller, 7', 3 pt., 540 PTO, S/N900168976

UTV/ATV & ATTACHMENT

2008 Land Pride Treker 4420ST UTV, ROPS, Honda V-Twin gas engine, 4x4, windshield, roof, radio, power dump box, receiver hitch, 895 hrs., S/N554198

2005 Kubota RTV 900RH UTV, Camo Edition, ROPS, diesel, hydro, 4WD, power steering, diff lock, radio, roof, front bumper, power dump box, rear receiver, 2,583 hrs., S/N47303

2014 Honda Foreman ATV, ES, EFI, 500cc, 4x4, power steering, front & rear racks, 1,237 miles

Demco ATV sprayer, 12v, folding boom & wand, ATV rack mount

SHOP EQUIPMENT

Miller Millermatic 250 mig welder, single phase

Miller Blue Star 180E welder/generator, gas

Miller Thunderbolt AC/DC welder, single phase

Caroline HV-12 band saw

Shamrock shop press, 30 ton

Shamrock engine hoist

Raider 311RS pressure washer, kerosene heat, S/N18096

Well-Built parts washer

Dual tire installer

John Deere oil station

Misc. tools

Misc. shop items including welding bench

TANKS

Fuel tank, 2,000 gal., w/pump

Fuel tank, 500 gal., w/pump

Demco saddle tanks, 250 gal., w/John Deere mounts

(3) Tanks, 110 gal.

(2) Tanks, 250 gal. (pallet size)

TIRES, TRACKS & SPACERS

(2) Goodyear DT800 380/90R50 tires, on 10-bolt rims, at 95%

(2) Firestone tracks, 16", for John Deere

(2) Wheel spacers, 15", tall tire

MISC. ITEMS

Portable mini biff toilet, on transport (vin on trailer LCAUS04183T332397 & plate ABKH196)



Registration, terms, & details at SteffesGroup.com



SteffesGroup.com